

\$339,000 - 2107 10410 102 Avenue, Edmonton

MLS® #E4448360

\$339,000

2 Bedroom, 2.00 Bathroom, 797 sqft

Condo / Townhouse on 0.00 Acres

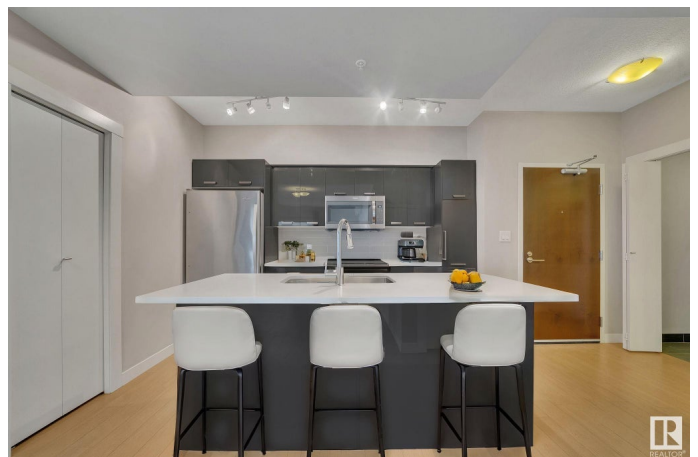
Downtown (Edmonton), Edmonton, AB

Fox Two encapsulates the spirit of city living, offering a dynamic lifestyle within walking distance of entertainment, dining, and cultural hotspots. Whether immersing yourself in the energy of the Ice District or exploring the Brewery District, this condo is your urban sanctuary and perfect for any city dweller! This sleek residence features modern kitchen which showcases stainless appliances and stylish finishes which are sure to impress chefs of all skill levels! The bedrooms provide a well-lit retreat and plenty of closet space while the bathrooms boast sleek fixtures for a touch of opulence. Added comforts include AC, in-suite laundry and an underground parking stall. Unparalleled convenience awaits you in the Fox Two! SOME PHOTOS ARE VIRTUALLY STAGED.

Built in 2017

Essential Information

| | |
|----------------|-----------|
| MLS® # | E4448360 |
| Price | \$339,000 |
| Bedrooms | 2 |
| Bathrooms | 2.00 |
| Full Baths | 2 |
| Square Footage | 797 |
| Acres | 0.00 |
| Year Built | 2017 |



| | |
|----------|------------------------|
| Type | Condo / Townhouse |
| Sub-Type | Apartment High Rise |
| Style | Single Level Apartment |
| Status | Active |

Community Information

| | |
|-------------|-----------------------|
| Address | 2107 10410 102 Avenue |
| Area | Edmonton |
| Subdivision | Downtown (Edmonton) |
| City | Edmonton |
| County | ALBERTA |
| Province | AB |
| Postal Code | T5J 0E9 |

Amenities

| | |
|----------------|---|
| Amenities | Air Conditioner, Detectors Smoke, Secured Parking |
| Parking Spaces | 1 |
| Parking | Underground |

Interior

| | |
|-------------------|---|
| Interior Features | ensuite bathroom |
| Appliances | Air Conditioning-Central, Dishwasher-Built-In, Refrigerator, Stacked Washer/Dryer, Stove-Electric |
| Heating | Baseboard, Water |
| # of Stories | 33 |
| Stories | 1 |
| Has Basement | Yes |
| Basement | None, No Basement |

Exterior

| | |
|-------------------|--|
| Exterior | Concrete, Brick, Stucco |
| Exterior Features | Back Lane, Golf Nearby, Playground Nearby, Public Transportation, Schools, Shopping Nearby, View City, See Remarks |
| Roof | EPDM Membrane |
| Construction | Concrete, Brick, Stucco |
| Foundation | Concrete Perimeter |

Additional Information

| | |
|-------------|-----------------|
| Date Listed | July 17th, 2025 |
|-------------|-----------------|

| | |
|----------------|---------|
| Days on Market | 14 |
| Zoning | Zone 12 |
| Condo Fee | \$425 |

DATA IS DEEMED RELIABLE BUT IS NOT GUARANTEED ACCURATE BY THE REALTORS® ASSOCIATION OF EDMONTON. COPYRIGHT 2025 BY THE REALTORS® ASSOCIATION OF EDMONTON. ALL RIGHTS RESERVED. Trademarks are owned or controlled by the Canadian Real Estate Association (CREA) and identify real estate professionals who are members of CREA (REALTOR®, REALTORS®) and/or the quality of services they provide (MLS®, Multiple Listing Service®)

Listing information last updated on July 31st, 2025 at 4:17am MDT