

\$484,900 - 428 Crysal Creek Link, Leduc

MLS® #E4447674

\$484,900

4 Bedroom, 3.00 Bathroom, 1,657 sqft

Single Family on 0.00 Acres

Crystal Creek_LEDU, Leduc, AB

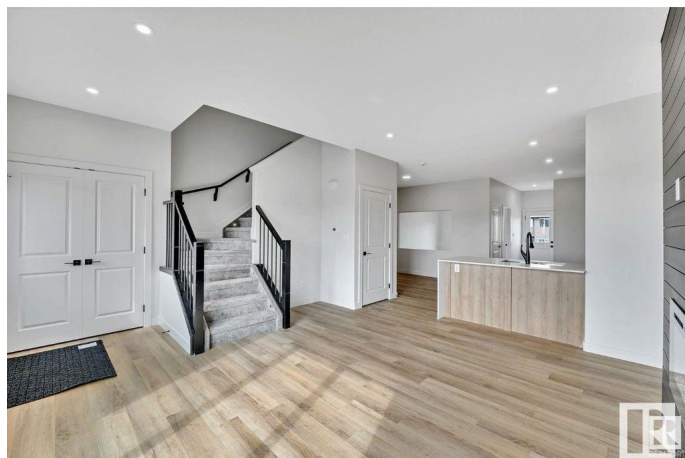
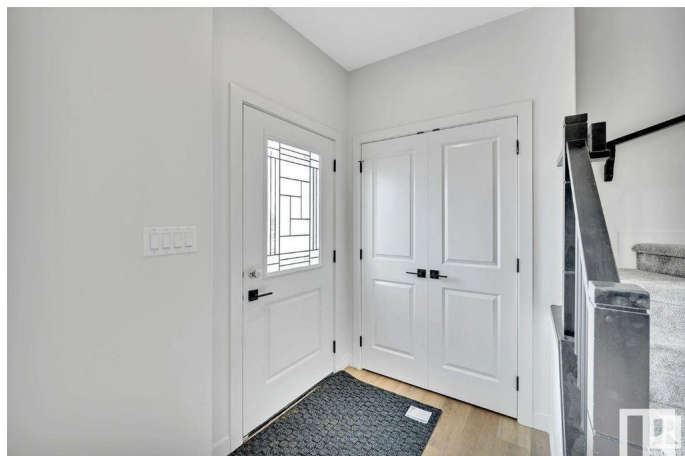
Discover this beautifully designed 1657 sqft home in one of Leduc's most sought-after Community WEST CREEK, just a 2-minute walk to school and close to all major amenities. Perfect for families, this home features a FULL BATHROOM and BEDROOM on the MAIN FLOOR—ideal for guests or multi-generational living. The open-concept layout includes a modern L-shaped kitchen, spacious living and dining areas, and 9 FT CEILING on all levels, enhancing the bright and airy feel. Upstairs, you'll find a BONUS ROOM, perfect for family movie nights or a home office. The second floor also boasts three generously sized bedrooms, including a luxurious master with a private ensuite. Enjoy outdoor living with a built-in deck, and park with ease in the detached double garage. With 2 FEATURE WALLS and MODERN FIREPLACE makes this home truly remarkable. Future potential abounds with a SIDE ENTRY to the basement, featuring 2 WINDOWS. DOUBLE DETACH GARAGE and DECK included.

Built in 2025

Essential Information

MLS® # E4447674

Price \$484,900



Bedrooms	4
Bathrooms	3.00
Full Baths	3
Square Footage	1,657
Acres	0.00
Year Built	2025
Type	Single Family
Sub-Type	Detached Single Family
Style	2 Storey
Status	Active

Community Information

Address	428 Crysall Creek Link
Area	Leduc
Subdivision	Crystal Creek_LEDU
City	Leduc
County	ALBERTA
Province	AB
Postal Code	T9E 1N3

Amenities

Amenities	Ceiling 9 ft.
Parking	Double Garage Detached

Interior

Interior Features	ensuite bathroom
Appliances	Garage Opener, Hood Fan
Heating	Forced Air-2, Natural Gas
Stories	2
Has Basement	Yes
Basement	Full, See Remarks

Exterior

Exterior	Wood, Vinyl
Exterior Features	Commercial, Schools
Roof	Asphalt Shingles
Construction	Wood, Vinyl
Foundation	Concrete Perimeter

Additional Information

Date Listed July 14th, 2025

Days on Market 7

Zoning Zone 81

DATA IS DEEMED RELIABLE BUT IS NOT GUARANTEED ACCURATE BY THE REALTORS® ASSOCIATION OF EDMONTON. COPYRIGHT 2025 BY THE REALTORS® ASSOCIATION OF EDMONTON. ALL RIGHTS RESERVED. Trademarks are owned or controlled by the Canadian Real Estate Association (CREA) and identify real estate professionals who are members of CREA (REALTOR®, REALTORS®) and/or the quality of services they provide (MLS®, Multiple Listing Service®)

Listing information last updated on July 21st, 2025 at 6:17pm MDT