

\$204,900 - 1201 Hooke Road, Edmonton

MLS® #E4447119

\$204,900

3 Bedroom, 1.50 Bathroom, 1,006 sqft

Condo / Townhouse on 0.00 Acres

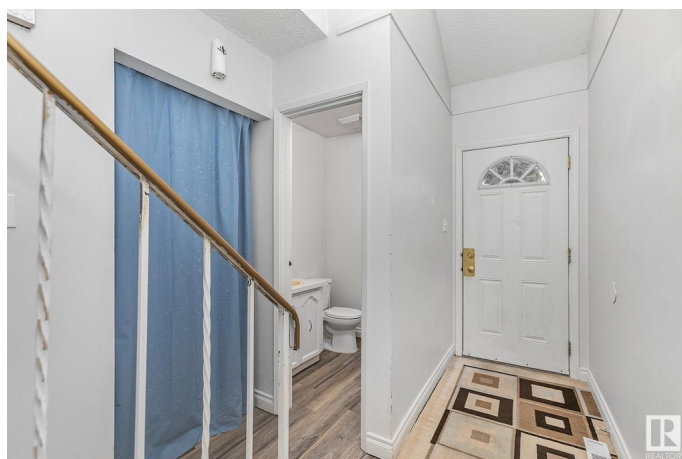
Overlanders, Edmonton, AB

AFFORDABLE LIVING in the WELL MANAGED TOWNHOUSE COMPLEX of Pioneer Estates. This 3 BEDROOM, 1.5 Bathroom, 2 Storey might be the one for you! Inside Updates include: Vinyl Plank Flooring, Baseboards/Trim, & the latest trending Paint Colors. The condo complex has undergone an exterior makeover this past decade adding to it's curb appeal & long-term value: windows, doors, siding, roof & 6ft maintenance free vinyl fences. Other unit features include, wood burning fireplace, basement with large family room, laundry area and tons of storage, & spacious primary bedroom. Comes with 1 parking stall with the option to rent a 2nd in from management, in front of the unit. Low condo fee of \$309/month. Public transit nearby & quick access to HWY 16 & Henday. Close to ravine, Hermitage & Rundle Parks, schools, shopping & other amenities. GREAT VALUE!

Built in 1976

Essential Information

MLS® #	E4447119
Price	\$204,900
Bedrooms	3
Bathrooms	1.50
Full Baths	1
Half Baths	1



Square Footage	1,006
Acres	0.00
Year Built	1976
Type	Condo / Townhouse
Sub-Type	Townhouse
Style	2 Storey
Status	Active

Community Information

Address	1201 Hooke Road
Area	Edmonton
Subdivision	Overlanders
City	Edmonton
County	ALBERTA
Province	AB
Postal Code	T5A 4A5

Amenities

Amenities	Patio
Parking Spaces	1
Parking	Stall

Interior

Appliances	Dryer, Refrigerator, Stove-Electric, Washer, Window Coverings
Heating	Forced Air-1, Natural Gas
Fireplace	Yes
Fireplaces	Stone Facing
Stories	3
Has Basement	Yes
Basement	Full, Partially Finished

Exterior

Exterior	Wood
Exterior Features	Fenced, Golf Nearby, Low Maintenance Landscape, Picnic Area, Playground Nearby, Public Transportation, Schools, Shopping Nearby
Roof	Asphalt Shingles
Construction	Wood
Foundation	Concrete Perimeter

Additional Information

Date Listed	July 10th, 2025
Days on Market	14
Zoning	Zone 35
Condo Fee	\$309

DATA IS DEEMED RELIABLE BUT IS NOT GUARANTEED ACCURATE BY THE REALTORS® ASSOCIATION OF EDMONTON. COPYRIGHT 2025 BY THE REALTORS® ASSOCIATION OF EDMONTON. ALL RIGHTS RESERVED. Trademarks are owned or controlled by the Canadian Real Estate Association (CREA) and identify real estate professionals who are members of CREA (REALTOR®, REALTORS®) and/or the quality of services they provide (MLS®, Multiple Listing Service®)

Listing information last updated on July 23rd, 2025 at 11:17pm MDT