

\$525,000 - 16053 84 Street, Edmonton

MLS® #E4443426

\$525,000

5 Bedroom, 3.50 Bathroom, 1,808 sqft

Single Family on 0.00 Acres

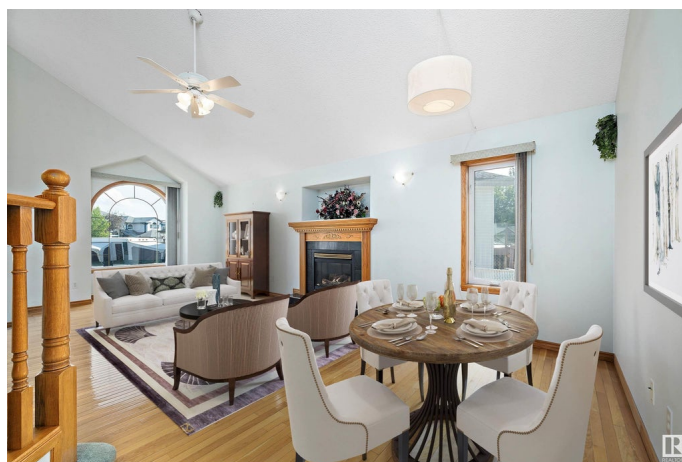
Belle Rive, Edmonton, AB

Situated in the prestigious community of Belle Rive, this original-owner 1.5 storey home offers over 1,800 sqft of timeless elegance on a quiet pie-shaped lot in a tranquil cul-de-sac. Vaulted ceilings and gleaming hardwood floors create a grand, light-filled ambiance. The kitchen boasts maple cabinetry, abundant storage, and sleek quartz countertops (2022). With 5 bedrooms—including one on the main floor—3.5 bathrooms, main floor laundry, and a fully finished basement with a bedroom, full bath, and cold room, the layout blends sophistication with functionality. Enjoy the warmth of a gas fireplace, comfort of central A/C, and the beauty of a manicured lawn with a spacious deck. A double attached garage and extra-wide driveway provide ample parking. Ideally located near the Henday, Northgate, and public transit—this is executive living in one of Edmonton's most sought-after neighbourhoods.

Built in 1998

Essential Information

MLS® #	E4443426
Price	\$525,000
Bedrooms	5
Bathrooms	3.50
Full Baths	3



Half Baths	1
Square Footage	1,808
Acres	0.00
Year Built	1998
Type	Single Family
Sub-Type	Detached Single Family
Style	1 and Half Storey
Status	Active

Community Information

Address	16053 84 Street
Area	Edmonton
Subdivision	Belle Rive
City	Edmonton
County	ALBERTA
Province	AB
Postal Code	T5Z 3G5

Amenities

Amenities	Air Conditioner, Ceiling 9 ft., Deck, Hot Water Natural Gas, Vaulted Ceiling, Vinyl Windows
Parking	Double Garage Attached

Interior

Interior Features	ensuite bathroom
Appliances	Dishwasher-Built-In, Dryer, Refrigerator, Stove-Electric, Washer
Heating	Forced Air-1, Natural Gas
Fireplace	Yes
Fireplaces	See Remarks
Stories	3
Has Basement	Yes
Basement	Full, Finished

Exterior

Exterior	Wood, Stucco
Exterior Features	Cul-De-Sac, Fenced, Flat Site, Landscaped, Level Land, Schools, Shopping Nearby
Roof	Asphalt Shingles
Construction	Wood, Stucco

Foundation Concrete Perimeter

School Information

Elementary Florence Hallock School
Middle Florence Hallock School
High Queen Elizabeth School

Additional Information

Date Listed June 20th, 2025
Days on Market 2
Zoning Zone 28

DATA IS DEEMED RELIABLE BUT IS NOT GUARANTEED ACCURATE BY THE REALTORS® ASSOCIATION OF EDMONTON. COPYRIGHT 2025 BY THE REALTORS® ASSOCIATION OF EDMONTON. ALL RIGHTS RESERVED.Trademarks are owned or controlled by the Canadian Real Estate Association (CREA) and identify real estate professionals who are members of CREA (REALTOR®, REALTORS®) and/or the quality of services they provide (MLS®, Multiple Listing Service®)
Listing information last updated on June 22nd, 2025 at 8:17am MDT