

## **\$675,000 - 16023 138 Street, Edmonton**

MLS® #E4439470

**\$675,000**

4 Bedroom, 3.50 Bathroom, 1,886 sqft

Single Family on 0.00 Acres

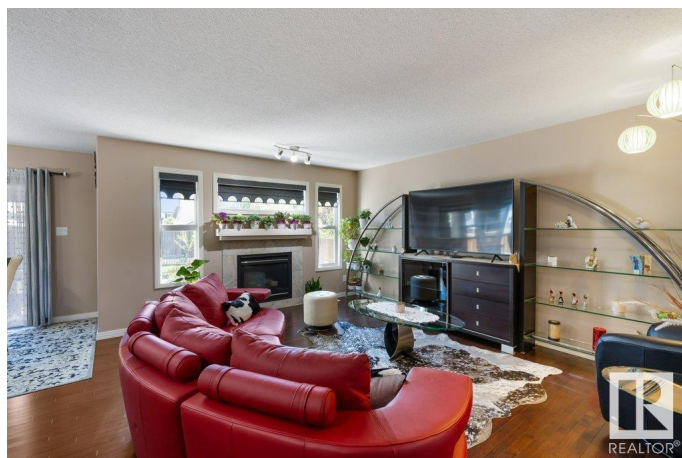
Carlton, Edmonton, AB

Beautiful, very well-kept 2 story home in the desirable Carlton community with over 2,300 sq ft of living space! This open-concept gem is within walking distance to school, parks & playgrounds. The fabulous kitchen features an island, granite countertops, stainless steel appliances, a walk-in pantry & a large dining nook with oversized patio doors that lead to a composite deck with a covered gazebo. Lots of windows for extra natural light. Upstairs offers a spacious bonus room, 3 generous bedrooms, and a 4-pc bath. The extra-large primary suite has walk-in closet & luxurious 5-pc ensuite. The fully finished basement includes 2 more bedrooms, a 4-pc bath, large family room & plenty of storage. Main floor laundry and a double attached garage. The fully landscaped yard is filled with perennials, trees, a garden area, & includes a shed. Excellent location close to shopping, public transit & restaurants. Ideal family home!

Built in 2010

### **Essential Information**

MLS® #	E4439470
Price	\$675,000
Bedrooms	4
Bathrooms	3.50
Full Baths	3



Half Baths	1
Square Footage	1,886
Acres	0.00
Year Built	2010
Type	Single Family
Sub-Type	Detached Single Family
Style	2 Storey
Status	Active

### Community Information

Address	16023 138 Street
Area	Edmonton
Subdivision	Carlton
City	Edmonton
County	ALBERTA
Province	AB
Postal Code	T6V 0E2

### Amenities

Amenities	Ceiling 9 ft., Deck, Gazebo, Vaulted Ceiling
Parking	Double Garage Attached

### Interior

Interior Features	ensuite bathroom
Appliances	Dishwasher-Built-In, Dryer, Garage Control, Garage Opener, Hood Fan, Refrigerator, Stove-Electric, Washer, Window Coverings, See Remarks
Heating	Forced Air-1, Natural Gas
Stories	3
Has Basement	Yes
Basement	Full, Finished

### Exterior

Exterior	Wood, Stone, Vinyl
Exterior Features	Fenced, Landscaped, Playground Nearby, Public Transportation, Schools, Shopping Nearby
Roof	Asphalt Shingles
Construction	Wood, Stone, Vinyl
Foundation	Concrete Perimeter

### Additional Information

Date Listed May 30th, 2025

Days on Market 5

Zoning Zone 27

DATA IS DEEMED RELIABLE BUT IS NOT GUARANTEED ACCURATE BY THE REALTORS® ASSOCIATION OF EDMONTON. COPYRIGHT 2025 BY THE REALTORS® ASSOCIATION OF EDMONTON. ALL RIGHTS RESERVED. Trademarks are owned or controlled by the Canadian Real Estate Association (CREA) and identify real estate professionals who are members of CREA (REALTOR®, REALTORS®) and/or the quality of services they provide (MLS®, Multiple Listing Service®)

Listing information last updated on June 4th, 2025 at 5:32am MDT