

## \$599,900 - 16904 62 Street, Edmonton

MLS® #E4438280

**\$599,900**

5 Bedroom, 3.00 Bathroom, 2,605 sqft

Single Family on 0.00 Acres

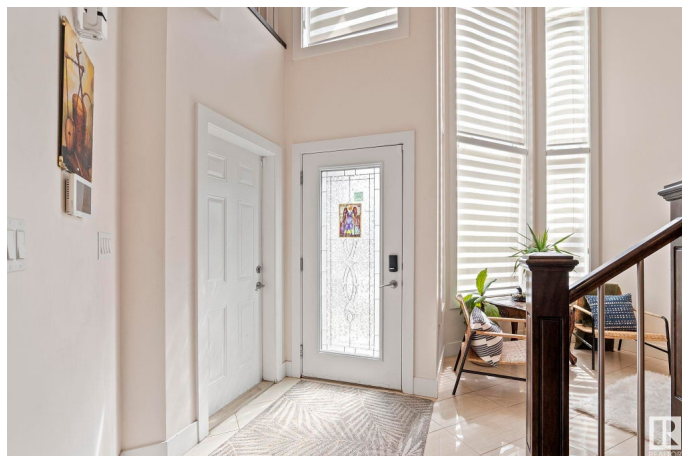
McConachie Area, Edmonton, AB

Gorgeous 2600sf 2 storey w/ basement side entrance. 5 BEDROOMS ABOVE GROUND! This beautiful home impresses right as you walk in the front door with soaring 18' ceilings - a full wall of windows & glossy tiles the whole main floor! Open concept at the back of the home with a gorgeous kitchen - dark cabinets, white granite counter & mosaic backsplash, a large granite island with stool seating & newer stainless steel appliances. There's a gas fireplace in the living room & the dining area opens up to the west-facing back yard. Main floor also features a bedroom & full bathroom with tub! There are 4 bedrooms upstairs, 2 full bathrooms, a laundry room & a loft area for an office or play area. The basement is unfinished, but the bathroom is roughed in, 9' ceilings & large windows will make for a great basement or future suite. Good sized yard & great location a block away from a K-6 school & a couple block walk to No Frills.

Built in 2014

### Essential Information

MLS® #	E4438280
Price	\$599,900
Bedrooms	5
Bathrooms	3.00
Full Baths	3



Square Footage	2,605
Acres	0.00
Year Built	2014
Type	Single Family
Sub-Type	Detached Single Family
Style	2 Storey
Status	Active

### Community Information

Address	16904 62 Street
Area	Edmonton
Subdivision	McConachie Area
City	Edmonton
County	ALBERTA
Province	AB
Postal Code	T5Y 3K4

### Amenities

Amenities	Ceiling 9 ft., Closet Organizers, Deck, Hot Water Tankless, Vinyl Windows, Walk-up Basement
Parking	Double Garage Attached

### Interior

Interior Features	ensuite bathroom
Appliances	Dishwasher-Built-In, Dryer, Refrigerator, Stove-Electric, Washer, Window Coverings
Heating	Forced Air-1, Natural Gas
Fireplace	Yes
Fireplaces	Tile Surround
Stories	2
Has Basement	Yes
Basement	Full, Unfinished

### Exterior

Exterior	Wood, Stucco
Exterior Features	Fenced, Landscaped, Schools, Shopping Nearby
Roof	Asphalt Shingles
Construction	Wood, Stucco
Foundation	Concrete Perimeter

**School Information**

Elementary	Soraya Hafez
Middle	Steele Heights
High	ME Lazerte

**Additional Information**

Date Listed	May 23rd, 2025
Days on Market	15
Zoning	Zone 03

DATA IS DEEMED RELIABLE BUT IS NOT GUARANTEED ACCURATE BY THE REALTORS® ASSOCIATION OF EDMONTON. COPYRIGHT 2025 BY THE REALTORS® ASSOCIATION OF EDMONTON. ALL RIGHTS RESERVED.Trademarks are owned or controlled by the Canadian Real Estate Association (CREA) and identify real estate professionals who are members of CREA (REALTOR®, REALTORS®) and/or the quality of services they provide (MLS®, Multiple Listing Service®)

Listing information last updated on June 7th, 2025 at 5:02am MDT