

# **\$849,900 - 181 52465 Rge Road 213, Rural Strathcona County**

MLS® #E4437262

**\$849,900**

4 Bedroom, 2.50 Bathroom, 2,588 sqft

Rural on 2.39 Acres

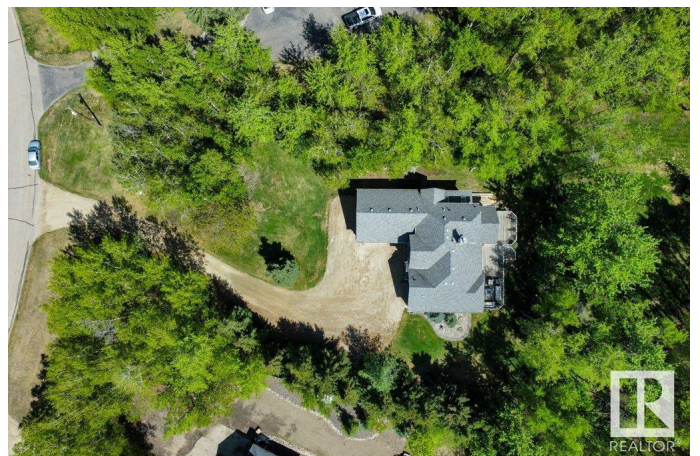
Hude Estates, Rural Strathcona County, AB

Welcome to the peaceful community of Hude Estates. This beautifully treed 2.39-acre property is just minutes from Ardrossan, 15 minutes to Sherwood Park, and only 20 minutes to Edmonton. Offering 2588 sqft of well-maintained living space, this home features 3+1 bedrooms and 3 bathrooms. The open-concept layout and expansive windows fill the home with natural light and offer gorgeous views of the lush surroundings. The main floor includes the primary suite with a 5-piece ensuite and walk-in closet, a formal dining room, spacious living room, adjoining family room with a two-sided fireplace, a stunning kitchen, laundry, and a 2-piece bath. Upstairs you'll find two generous bedrooms, a 5-piece bathroom, and a huge bonus room with a pool table. The partially finished basement includes a large bedroom, rec room, workshop, and plenty of storage. Step outside to a large deck overlooking a quiet, private yard wrapped in nature. Other features: furnace/hot water tank (2023), AC (2020). Thanks for showing.

Built in 1998

## **Essential Information**

MLS® #                      E4437262



Price	\$849,900
Bedrooms	4
Bathrooms	2.50
Full Baths	2
Half Baths	1
Square Footage	2,588
Acres	2.39
Year Built	1998
Type	Rural
Sub-Type	Detached Single Family
Style	2 Storey
Status	Active

### Community Information

Address	181 52465 Rge Road 213
Area	Rural Strathcona County
Subdivision	Hude Estates
City	Rural Strathcona County
County	ALBERTA
Province	AB
Postal Code	T8G 2E8

### Amenities

Features	Air Conditioner, Deck, No Animal Home, No Smoking Home, R.V. Storage
----------	--

### Interior

Interior Features	ensuite bathroom
Heating	Forced Air-1, Natural Gas
Fireplace	Yes
Stories	2
Has Basement	Yes
Basement	Full, Partially Finished

### Exterior

Exterior	Wood
Exterior Features	Backs Onto Park/Trees, Landscaped, No Back Lane, Not Fenced, Private Setting
Construction	Wood

Foundation                      Slab

**Additional Information**

Date Listed                      May 18th, 2025

Days on Market                18

Zoning                            Zone 80

DATA IS DEEMED RELIABLE BUT IS NOT GUARANTEED ACCURATE BY THE REALTORS® ASSOCIATION OF EDMONTON. COPYRIGHT 2025 BY THE REALTORS® ASSOCIATION OF EDMONTON. ALL RIGHTS RESERVED.Trademarks are owned or controlled by the Canadian Real Estate Association (CREA) and identify real estate professionals who are members of CREA (REALTOR®, REALTORS®) and/or the quality of services they provide (MLS®, Multiple Listing Service®)

Listing information last updated on June 5th, 2025 at 2:32am MDT