

\$519,900 - 15931 134 Street, Edmonton

MLS® #E4434102

\$519,900

4 Bedroom, 3.50 Bathroom, 1,920 sqft

Single Family on 0.00 Acres

Carlton, Edmonton, AB

SPACIOUS FAMILY HOME! This 4 bedroom, 4 bath 2 storey is located in the wonderful community of Carlton. Featuring loads of upgrades including paint, flooring 2025, a new Navian HWOD, furnace, A/C, water softener (reverse osmosis) all in 2020, new garage door (2021) and roof (2023). The bright main level has a modern white kitchen with large island, quality stainless steel appliances (gas stove) and pantry. The sunny breakfast nook overlooks the living room and has patio doors leading onto the deck and huge fenced backyard. Upstairs has a massive bonus room with high vaulted ceilings, 3 generous bedrooms, the primary with it's own 4 pce ensuite, laundry room and family bathroom. The basement offers lots more living space with another bathroom, bedroom, office/flex space and plenty of storage. The location is ideal, within walking distance to Elizabeth Finch school, close to major shopping, restaurants and the Anthony Henday. It just doesn't get any better!

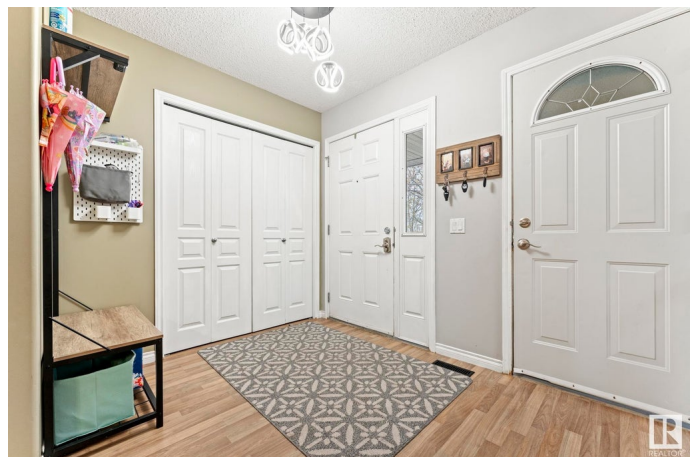
Built in 2005

Essential Information

MLS® # E4434102

Price \$519,900

Bedrooms 4



Bathrooms	3.50
Full Baths	3
Half Baths	1
Square Footage	1,920
Acres	0.00
Year Built	2005
Type	Single Family
Sub-Type	Detached Single Family
Style	2 Storey
Status	Active

Community Information

Address	15931 134 Street
Area	Edmonton
Subdivision	Carlton
City	Edmonton
County	ALBERTA
Province	AB
Postal Code	T6V 1W9

Amenities

Amenities	Deck, Detectors Smoke, Front Porch
Parking Spaces	4
Parking	Double Garage Attached

Interior

Interior Features	ensuite bathroom
Appliances	Dishwasher-Built-In, Dryer, Garage Control, Garage Opener, Refrigerator, Stove-Gas, Washer, Window Coverings
Heating	Forced Air-1, Natural Gas
Stories	3
Has Basement	Yes
Basement	Full, Partially Finished

Exterior

Exterior	Wood, Vinyl
Exterior Features	Fenced, Flat Site, Landscaped, Playground Nearby, Public Transportation, Schools, Shopping Nearby
Roof	Asphalt Shingles

Construction	Wood, Vinyl
Foundation	Concrete Perimeter

Additional Information

Date Listed	April 30th, 2025
Days on Market	12
Zoning	Zone 27

DATA IS DEEMED RELIABLE BUT IS NOT GUARANTEED ACCURATE BY THE REALTORS® ASSOCIATION OF EDMONTON. COPYRIGHT 2025 BY THE REALTORS® ASSOCIATION OF EDMONTON. ALL RIGHTS RESERVED.Trademarks are owned or controlled by the Canadian Real Estate Association (CREA) and identify real estate professionals who are members of CREA (REALTOR®, REALTORS®) and/or the quality of services they provide (MLS®, Multiple Listing Service®)

Listing information last updated on May 12th, 2025 at 5:17am MDT