

## \$410,000 - 20 Aurea Bay, Spruce Grove

MLS® #E4432714

**\$410,000**

3 Bedroom, 2.50 Bathroom, 1,518 sqft

Single Family on 0.00 Acres

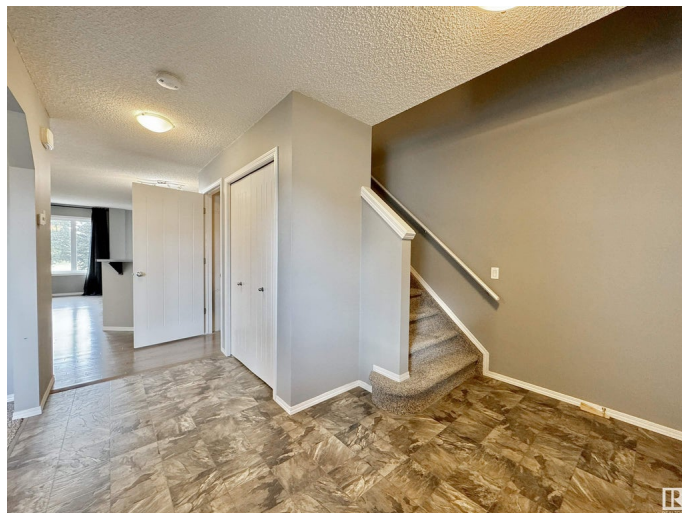
Jesperdale, Spruce Grove, AB

Welcome to this beautiful property in the neighborhood of Jesperdale in Spruce Grove! This Duplex backs onto the golf course adding a gorgeous view to your everyday living! The open concept on the main floor is absolutely amazing for you and your family. The main floor also offers you an office space or playroom for kids. You will find 3 bedrooms (Including Primary) upstairs as well as laundry and 2 full bathrooms including the ensuite. This home features just over 1500 sqft2 with an unfinished basement for you to add your own touch to it. This property is close to schools, shopping and more!

Built in 2015

### Essential Information

MLS® #	E4432714
Price	\$410,000
Bedrooms	3
Bathrooms	2.50
Full Baths	2
Half Baths	1
Square Footage	1,518
Acres	0.00
Year Built	2015
Type	Single Family
Sub-Type	Half Duplex



Style	2 Storey
Status	Active

### Community Information

Address	20 Aurea Bay
Area	Spruce Grove
Subdivision	Jesperdale
City	Spruce Grove
County	ALBERTA
Province	AB
Postal Code	T7X 0V4

### Amenities

Amenities	Deck, Detectors Smoke, Exterior Walls- 2"x6", No Animal Home
Parking Spaces	2
Parking	Insulated, Single Garage Attached

### Interior

Interior Features	ensuite bathroom
Appliances	Dishwasher-Built-In, Dryer, Garage Opener, Microwave Hood Fan, Refrigerator, Stove-Electric, Washer, Window Coverings
Heating	Forced Air-1, Natural Gas
Stories	2
Has Basement	Yes
Basement	Full, Unfinished

### Exterior

Exterior	Wood, Vinyl
Exterior Features	Cul-De-Sac, Golf Nearby, Park/Reserve, Public Swimming Pool, Schools, Shopping Nearby
Roof	Asphalt Shingles
Construction	Wood, Vinyl
Foundation	Concrete Perimeter

### Additional Information

Date Listed	April 25th, 2025
Days on Market	9
Zoning	Zone 91

DATA IS DEEMED RELIABLE BUT IS NOT GUARANTEED ACCURATE BY THE REALTORS® ASSOCIATION OF EDMONTON. COPYRIGHT 2025 BY THE REALTORS® ASSOCIATION OF EDMONTON. ALL RIGHTS

RESERVED.Trademarks are owned or controlled by the Canadian Real Estate Association (CREA) and identify real estate professionals who are members of CREA (REALTOR®, REALTORS®) and/or the quality of services they provide (MLS®, Multiple Listing Service®)

Listing information last updated on May 3rd, 2025 at 9:31pm MDT