

Courtesy Of Logan Patterson Of Logic Realty

## \$80,000 - 107 10811 115 Street, Edmonton

MLS® #E4431746

**\$80,000**

1 Bedroom, 1.00 Bathroom, 603 sqft  
Condo / Townhouse on 0.00 Acres

Queen Mary Park, Edmonton, AB

**AFFORDABLE & TURN KEY!** Comfortable 1 bed 1 bath, with upgraded stainless steel appliances, plus a convection stove, new paint and a spacious bedroom with plenty of storage! **LOW Condo Fees, Low Taxes, and a low mortgage payment, great starter home opportunity!** Located on a quiet tree lined street, close to shopping, and easy access to NAIT, and MacEwan. Comes with one, energized parking stall.

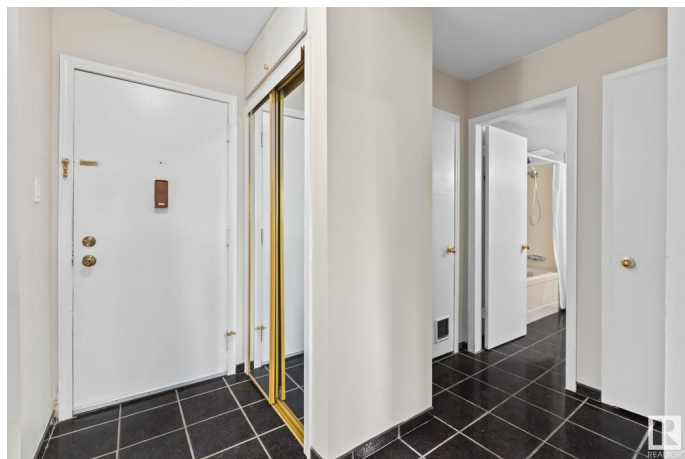
Built in 1968

### Essential Information

MLS® #	E4431746
Price	\$80,000
Bedrooms	1
Bathrooms	1.00
Full Baths	1
Square Footage	603
Acres	0.00
Year Built	1968
Type	Condo / Townhouse
Sub-Type	Lowrise Apartment
Style	Single Level Apartment
Status	Active

### Community Information

Address 107 10811 115 Street



Area	Edmonton
Subdivision	Queen Mary Park
City	Edmonton
County	ALBERTA
Province	AB
Postal Code	T5H 3L2

### **Amenities**

Amenities	Off Street Parking, On Street Parking, Intercom, No Animal Home, No Smoking Home, Security Door, Storage-Locker Room, Vinyl Windows
Parking Spaces	1
Parking	Stall

### **Interior**

Appliances	Dishwasher-Built-In, Hood Fan, Refrigerator, Stove-Electric
Heating	Baseboard, Natural Gas
# of Stories	3
Stories	1
Has Basement	Yes
Basement	None, No Basement

### **Exterior**

Exterior	Wood, Brick, Stucco
Exterior Features	Back Lane, No Through Road, Private Setting, Public Transportation, Schools, Shopping Nearby, Treed Lot
Roof	Flat
Construction	Wood, Brick, Stucco
Foundation	Concrete Perimeter

### **Additional Information**

Date Listed	April 18th, 2025
Days on Market	5
Zoning	Zone 08
Condo Fee	\$343

DATA IS DEEMED RELIABLE BUT IS NOT GUARANTEED ACCURATE BY THE REALTORS® ASSOCIATION OF EDMONTON. COPYRIGHT 2025 BY THE REALTORS® ASSOCIATION OF EDMONTON. ALL RIGHTS RESERVED. Trademarks are owned or controlled by the Canadian Real Estate Association (CREA) and identify real estate professionals who are members of CREA (REALTOR®, REALTORS®) and/or the quality of services they provide (MLS®, Multiple Listing Service®)

Listing information last updated on April 22nd, 2025 at 9:31pm MDT