

\$175,000 - 474 10520 120 Street, Edmonton

MLS® #E4430657

\$175,000

2 Bedroom, 2.00 Bathroom, 830 sqft

Condo / Townhouse on 0.00 Acres

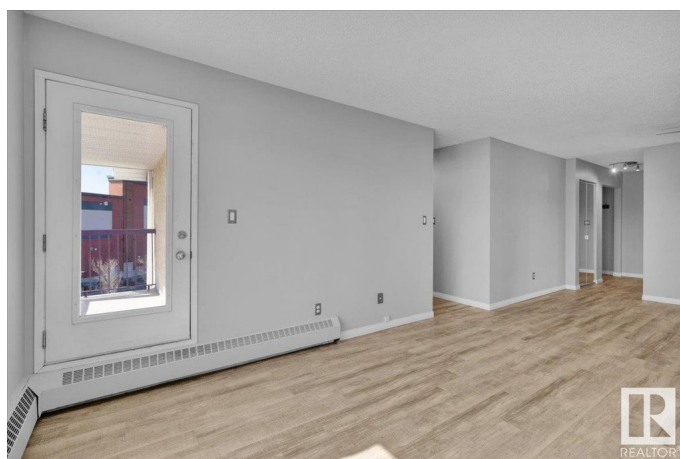
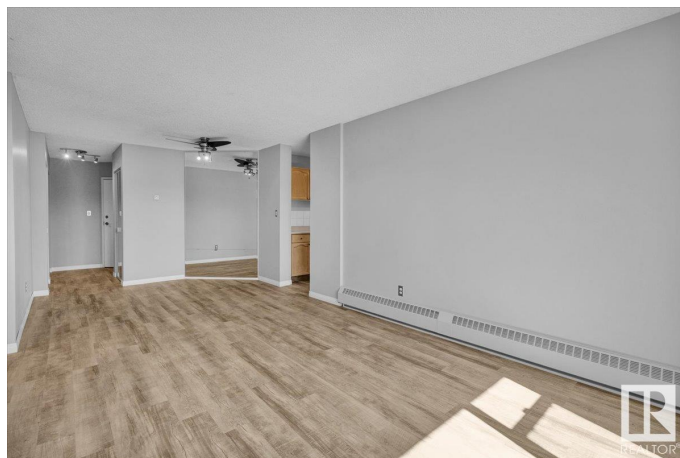
Queen Mary Park, Edmonton, AB

Top-floor 2 bed, 2 bath CORNER unit at The Pointe Uptown with stunning downtown views! This bright, freshly painted home features new flooring throughout, stainless steel appliances, and a smart, open layout filled with natural light. Enjoy the convenience of in-suite laundry, a spacious balcony for summer evenings, and a covered powered parking stall to keep your vehicle protected year-round. Condo fees cover most utilities except power. Just minutes from MacEwan University and Unity Square Centre, with walking trails and a greenbelt right nearby. Unit is move-in ready.

Built in 1994

Essential Information

MLS® #	E4430657
Price	\$175,000
Bedrooms	2
Bathrooms	2.00
Full Baths	2
Square Footage	830
Acres	0.00
Year Built	1994
Type	Condo / Townhouse
Sub-Type	Lowrise Apartment
Style	Single Level Apartment
Status	Active



Community Information

Address	474 10520 120 Street
Area	Edmonton
Subdivision	Queen Mary Park
City	Edmonton
County	ALBERTA
Province	AB
Postal Code	T5H 4L9

Amenities

Amenities	No Animal Home, No Smoking Home, Parking-Visitor
Parking	Stall

Interior

Interior Features	ensuite bathroom
Appliances	Dishwasher-Built-In, Dryer, Refrigerator, Stove-Electric, Washer
Heating	Baseboard, Natural Gas
# of Stories	4
Stories	1
Has Basement	Yes
Basement	None, No Basement

Exterior

Exterior	Wood, Stucco
Exterior Features	Backs Onto Park/Trees, Corner Lot, Fenced, Landscaped, Playground Nearby, Public Swimming Pool, Public Transportation, Schools, Shopping Nearby, Ski Hill Nearby, View Downtown
Roof	Asphalt Shingles
Construction	Wood, Stucco
Foundation	Concrete Perimeter

Additional Information

Date Listed	April 12th, 2025
Days on Market	12
Zoning	Zone 08
Condo Fee	\$418

DATA IS DEEMED RELIABLE BUT IS NOT GUARANTEED ACCURATE BY THE REALTORS® ASSOCIATION OF EDMONTON. COPYRIGHT 2025 BY THE REALTORS® ASSOCIATION OF EDMONTON. ALL RIGHTS RESERVED. Trademarks are owned or controlled by the Canadian Real Estate Association (CREA) and identify real estate professionals who are members of CREA (REALTOR®, REALTORS®) and/or the quality of services they

provide (MLS® , Multiple Listing Service®)
Listing information last updated on April 24th, 2025 at 3:32am MDT