

Courtesy Of Ken E Knudsen Of RE/MAX Elite

\$259,900 - 202 2903 Rabbit Hill Road, Edmonton

MLS® #E4428979

\$259,900

2 Bedroom, 2.00 Bathroom, 1,176 sqft
Condo / Townhouse on 0.00 Acres

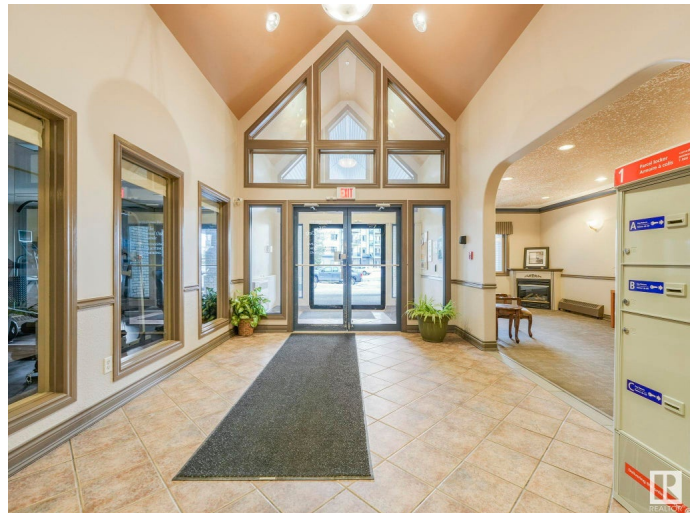
Hodgson, Edmonton, AB

Welcome to this beautiful South West facing 2-bedroom, 2-bathroom second-floor corner unit condo, offering an exceptional blend of comfort, style, and convenience. Located in a well-maintained building with a host of desirable features, this home is perfect for anyone seeking modern living with plenty of space. Key Features are 2 spacious bedrooms, 2 bathrooms with one of them an ensuite to the primary bedroom, in suite laundry in the storage room, 2 underground heated parking stalls with storage cage in front of them, fitness room, and social room. This condo offers not only great living space but also access to a community-oriented building with amazing amenities. It's located in a desirable area close to shopping, dining, and transportation routes. Don't miss out on the opportunity to make this wonderful condo your new home!

Built in 2000

Essential Information

MLS® #	E4428979
Price	\$259,900
Bedrooms	2
Bathrooms	2.00
Full Baths	2
Square Footage	1,176



Acres	0.00
Year Built	2000
Type	Condo / Townhouse
Sub-Type	Lowrise Apartment
Style	Single Level Apartment
Status	Active

Community Information

Address	202 2903 Rabbit Hill Road
Area	Edmonton
Subdivision	Hodgson
City	Edmonton
County	ALBERTA
Province	AB
Postal Code	T6R 3A3

Amenities

Amenities	Exercise Room, Guest Suite, Intercom, Parking-Visitor, Party Room, Security Door, Storage-In-Suite, Storage Cage
Parking Spaces	2
Parking	Underground

Interior

Interior Features	ensuite bathroom
Appliances	Dishwasher-Built-In, Microwave Hood Fan, Refrigerator, Stacked Washer/Dryer, Stove-Electric, Window Coverings
Heating	Hot Water, Natural Gas
Fireplace	Yes
Fireplaces	Corner
# of Stories	4
Stories	1
Has Basement	Yes
Basement	None, No Basement

Exterior

Exterior	Wood, Stone, Stucco, Vinyl
Exterior Features	Golf Nearby, Landscaped, Park/Reserve, Playground Nearby, Public Transportation, Schools, Shopping Nearby
Roof	Asphalt Shingles

Construction Wood, Stone, Stucco, Vinyl
Foundation Concrete Perimeter

Additional Information

Date Listed March 31st, 2025

Days on Market 6

Zoning Zone 14

Condo Fee \$506

DATA IS DEEMED RELIABLE BUT IS NOT GUARANTEED ACCURATE BY THE REALTORS® ASSOCIATION OF EDMONTON. COPYRIGHT 2025 BY THE REALTORS® ASSOCIATION OF EDMONTON. ALL RIGHTS RESERVED. Trademarks are owned or controlled by the Canadian Real Estate Association (CREA) and identify real estate professionals who are members of CREA (REALTOR®, REALTORS®) and/or the quality of services they provide (MLS®, Multiple Listing Service®)

Listing information last updated on April 6th, 2025 at 4:02pm MDT