

\$280,000 - 505 10728 82 Avenue, Edmonton

MLS® #E4428888

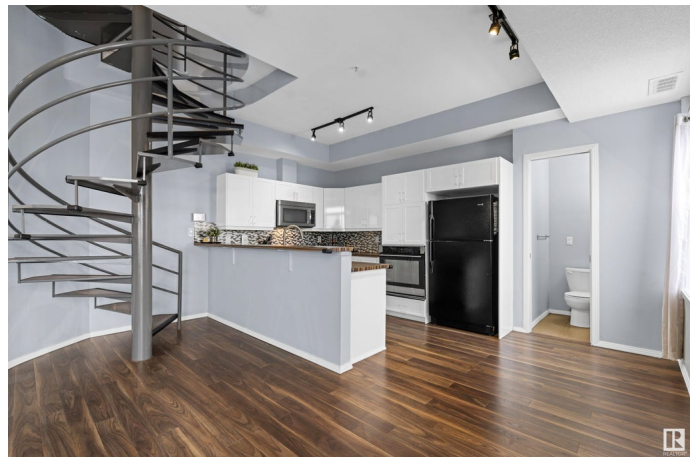
\$280,000

2 Bedroom, 1.50 Bathroom, 989 sqft

Condo / Townhouse on 0.00 Acres

Garneau, Edmonton, AB

Experience elevated living in this penthouse, perfectly positioned in one of Edmonton's most vibrant neighborhoods. Steps from boutique shops, trendy caf  s, top-rated restaurants, lively markets & the University of Alberta, this location offers both convenience & character. Become captivated by the striking exposed brick, soaring 9' ceilings & expansive windows that flood the space with natural light. A private north-facing balcony provides incredible city views. The kitchen is a dream, featuring sleek white cabinetry, stainless steel & black appliances, pristine countertops, a custom tile backsplash & an elevated breakfast bar  perfect for casual dining. The blend of industrial charm & modern design continues with a statement-making circular staircase. Cozy up in the living room, where a gas fireplace creates the perfect ambiance for snowy nights at home. Upstairs, you'll find two spacious bedrooms, a stylish 3-piece bath, in-suite laundry + a private second entry. This is a rare find, it must be seen!



Built in 1948

Essential Information

MLS® # E4428888

Price \$280,000

Bedrooms	2
Bathrooms	1.50
Full Baths	1
Half Baths	1
Square Footage	989
Acres	0.00
Year Built	1948
Type	Condo / Townhouse
Sub-Type	Lowrise Apartment
Style	Multi Level Apartment
Status	Active

Community Information

Address	505 10728 82 Avenue
Area	Edmonton
Subdivision	Garneau
City	Edmonton
County	ALBERTA
Province	AB
Postal Code	T6E 6P5

Amenities

Amenities	On Street Parking, Ceiling 9 ft., Deck, Secured Parking, Security Door, Storage-In-Suite
Parking Spaces	1
Parking	Stall, Underground

Interior

Appliances	Air Conditioning-Central, Dishwasher-Built-In, Microwave Hood Fan, Oven-Built-In, Refrigerator, Stove-Countertop Electric, Window Coverings
Heating	Forced Air-1, Natural Gas
Fireplace	Yes
Fireplaces	Heatilator/Fan, Mantel
# of Stories	5
Stories	2
Has Basement	Yes
Basement	None, No Basement

Exterior

Exterior	Brick, Stucco
Exterior Features	Back Lane, Flat Site, Golf Nearby, Park/Reserve, Paved Lane, Playground Nearby, Public Swimming Pool, Public Transportation, Schools, Shopping Nearby, View City
Roof	Tar & Gravel
Construction	Brick, Stucco
Foundation	Concrete Perimeter

School Information

Elementary	Garneau/Lady of Mt Carmel
Middle	Allendale/McKernan
High	Strathcona

Additional Information

Date Listed	April 3rd, 2025
Days on Market	52
Zoning	Zone 15
Condo Fee	\$523

DATA IS DEEMED RELIABLE BUT IS NOT GUARANTEED ACCURATE BY THE REALTORS® ASSOCIATION OF EDMONTON. COPYRIGHT 2025 BY THE REALTORS® ASSOCIATION OF EDMONTON. ALL RIGHTS RESERVED. Trademarks are owned or controlled by the Canadian Real Estate Association (CREA) and identify real estate professionals who are members of CREA (REALTOR®, REALTORS®) and/or the quality of services they provide (MLS®, Multiple Listing Service®)

Listing information last updated on May 25th, 2025 at 7:02pm MDT