

Courtesy Of Melissa Sanregret and Susan G Young Of Real Broker

\$319,000 - 411 9503 101 Avenue, Edmonton

MLS® #E4428010

\$319,000

2 Bedroom, 1.00 Bathroom, 992 sqft

Condo / Townhouse on 0.00 Acres

Riverdale, Edmonton, AB

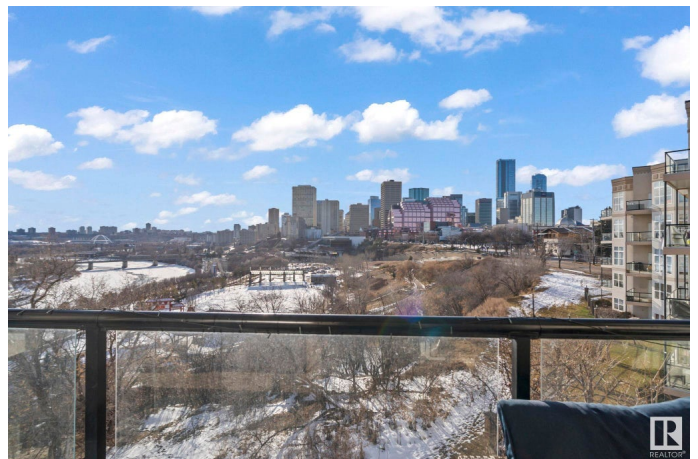
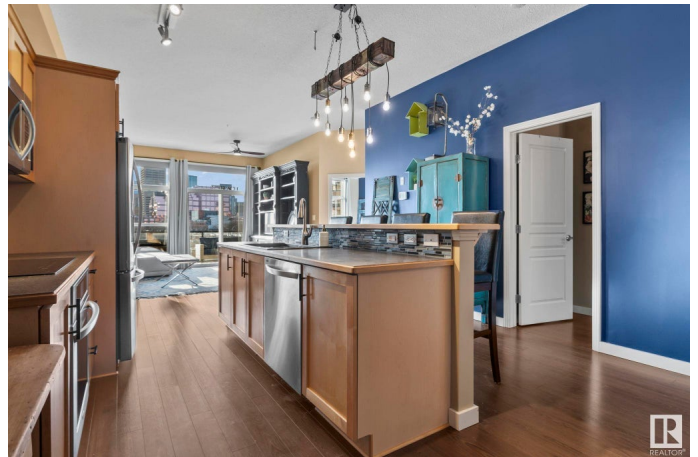
You wake up Sunday morning and pull back your new custom-fitted blackout curtains... the city skyline and unobstructed views of the river valley bid you good morning. The sun rises, glinting off the buildings and filling your home with a warm glow. Youâ€™ve got a busy week ahead, so you spend the day relaxing in the living room. Despite 10-foot ceilings throughout, your space still feels cozy and inviting. Later, you head into the kitchen, switch on your new custom lighting, and start dinner on the induction stove. You open the stainless steel fridge and pause - outside, the sky is putting on its usual evening show. You take your meal out to the patio and enjoy the sunset as it dips behind the buildings. As evening sets in, you head in to your 4-piece bathroom to run a bath in your soaker tub, the new hot water tank keeping the warm water flowing. And just like that, the week begins in your quiet, comfortable two-bedroom condoâ€™ with air conditioning, one underground parking stall, and extra storage included.

Built in 2002

Essential Information

MLS® # E4428010

Price \$319,000



Bedrooms	2
Bathrooms	1.00
Full Baths	1
Square Footage	992
Acres	0.00
Year Built	2002
Type	Condo / Townhouse
Sub-Type	Lowrise Apartment
Style	Single Level Apartment
Status	Active

Community Information

Address	411 9503 101 Avenue
Area	Edmonton
Subdivision	Riverdale
City	Edmonton
County	ALBERTA
Province	AB
Postal Code	T5H 4R1

Amenities

Amenities	Air Conditioner, Ceiling 10 ft., Detectors Smoke, No Smoking Home, Parking-Visitor, Secured Parking
Parking	Underground

Interior

Appliances	Dishwasher-Built-In, Dryer, Garage Opener, Microwave Hood Fan, Refrigerator, Washer, Window Coverings, Stove-Induction
Heating	Forced Air-1, Natural Gas
# of Stories	5
Stories	1
Has Basement	Yes
Basement	None, No Basement

Exterior

Exterior	Wood, Stucco
Exterior Features	Backs Onto Park/Trees, Flat Site, Golf Nearby, Hillside, Picnic Area, Playground Nearby, Public Transportation, Ravine View, River Valley View, River View, Schools, Shopping Nearby, View Downtown

Roof	Tar & Gravel
Construction	Wood, Stucco
Foundation	Concrete Perimeter

Additional Information

Date Listed	March 28th, 2025
Days on Market	46
Zoning	Zone 13
Condo Fee	\$460

DATA IS DEEMED RELIABLE BUT IS NOT GUARANTEED ACCURATE BY THE REALTORS® ASSOCIATION OF EDMONTON. COPYRIGHT 2025 BY THE REALTORS® ASSOCIATION OF EDMONTON. ALL RIGHTS RESERVED. Trademarks are owned or controlled by the Canadian Real Estate Association (CREA) and identify real estate professionals who are members of CREA (REALTOR®, REALTORS®) and/or the quality of services they provide (MLS®, Multiple Listing Service®)

Listing information last updated on May 13th, 2025 at 6:32am MDT