

\$449,900 - 16723 81 Avenue, Edmonton

MLS® #E4424992

\$449,900

5 Bedroom, 2.00 Bathroom, 978 sqft
Single Family on 0.00 Acres

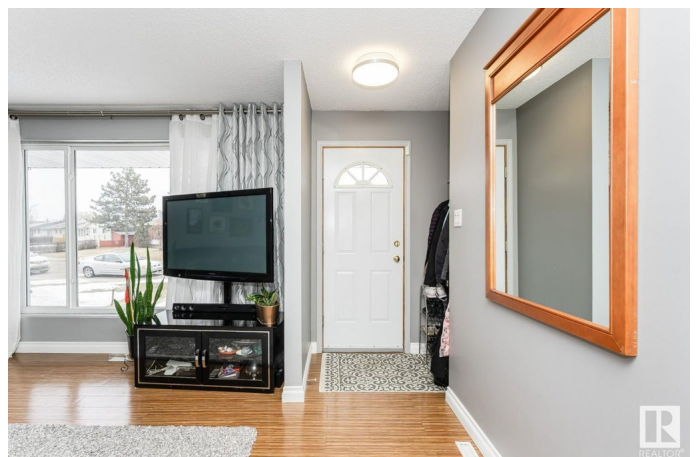
Elmwood, Edmonton, AB

Pride of ownership which is evident in this 5 Bedroom Home with a south facing fully fenced backyard. The Kitchen has New Quartz Countertops and Backsplash as well a newer Electric Counter Top Stove and built in Oven. Many upgrades include, Central Air, Central Vac, a water filtration system, a garburator and retractable screen doors. Cultured marble surround in both bathrooms. Basement bathroom also has in floor heating. All windows have been replaced. Basement is fully developed with a built in playhouse for the kids. There is an oversized, Heated Double Detached Garage (32x28) and a 3 car parking pad. Back yard comes with a Greenhouse with custom cedar planters and a flag stone path. Rare find in the well sought after community of Elmwood with close proximity to WEM. What a great place to call home and is a real pleasure to show.

Built in 1965

Essential Information

MLS® #	E4424992
Price	\$449,900
Bedrooms	5
Bathrooms	2.00
Full Baths	2
Square Footage	978



Acres	0.00
Year Built	1965
Type	Single Family
Sub-Type	Detached Single Family
Style	Bungalow
Status	Active

Community Information

Address	16723 81 Avenue
Area	Edmonton
Subdivision	Elmwood
City	Edmonton
County	ALBERTA
Province	AB
Postal Code	T5R 3P8

Amenities

Amenities	Air Conditioner, Greenhouse
Parking Spaces	5
Parking	Double Garage Detached, Heated, Over Sized

Interior

Appliances	Air Conditioning-Central, Dishwasher-Built-In, Dryer, Fan-Ceiling, Garage Opener, Microwave Hood Fan, Oven-Built-In, Refrigerator, Stove-Countertop Electric, Vacuum Systems, Washer, Window Coverings, Garage Heater
Heating	Forced Air-1, Natural Gas
Stories	2
Has Basement	Yes
Basement	Full, Finished

Exterior

Exterior	Wood, Brick, Vinyl
Exterior Features	Fenced, Flat Site, Landscaped, Park/Reserve, Playground Nearby, Public Transportation, Schools, Shopping Nearby
Roof	Asphalt Shingles
Construction	Wood, Brick, Vinyl
Foundation	Concrete Perimeter

Additional Information

Date Listed March 10th, 2025

Days on Market 4

Zoning Zone 22

DATA IS DEEMED RELIABLE BUT IS NOT GUARANTEED ACCURATE BY THE REALTORS® ASSOCIATION OF EDMONTON. COPYRIGHT 2025 BY THE REALTORS® ASSOCIATION OF EDMONTON. ALL RIGHTS RESERVED. Trademarks are owned or controlled by the Canadian Real Estate Association (CREA) and identify real estate professionals who are members of CREA (REALTOR®, REALTORS®) and/or the quality of services they provide (MLS®, Multiple Listing Service®)

Listing information last updated on March 14th, 2025 at 1:22pm MDT