

\$799,900 - 709 178a Street, Edmonton

MLS® #E4424502

\$799,900

5 Bedroom, 3.50 Bathroom, 2,670 sqft

Single Family on 0.00 Acres

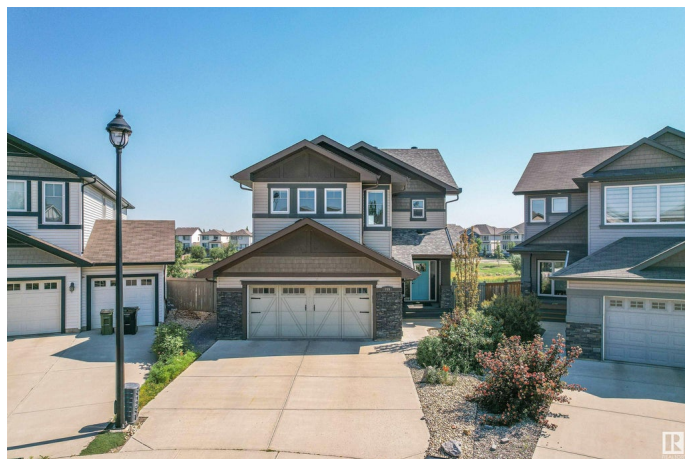
Windermere, Edmonton, AB

This stunning estate home in a quiet cul-de-sac boasts a WALKOUT basement, breathtaking pond views, and a luxury maintenance-free two-tier deck, perfect for outdoor entertaining. Inside, you'll find a grand dining area, a gourmet kitchen with stainless steel appliances and a walkthrough pantry, and a spacious living room. The master suite features a walk-in closet, a spa-like 5-piece ensuite, and serene pond views. An oversized bonus room offers flexibility as an extra bedroom or family space, while the finished walkout basement includes another bedroom, a full bath, and a sunroom-style den. Additional highlights include central A/C, a water softener, an oversized 2-car garage, and a premium 2023 roof ready for solar panels. Situated on one of the largest lots in the area, this home is within walking distance of Superstore and the new Italian Centre and is zoned for top-ranked public schools.

Built in 2013

Essential Information

MLS® #	E4424502
Price	\$799,900
Bedrooms	5
Bathrooms	3.50
Full Baths	3



Half Baths	1
Square Footage	2,670
Acres	0.00
Year Built	2013
Type	Single Family
Sub-Type	Detached Single Family
Style	2 Storey
Status	Active

Community Information

Address	709 178a Street
Area	Edmonton
Subdivision	Windermere
City	Edmonton
County	ALBERTA
Province	AB
Postal Code	T6W 2S6

Amenities

Amenities	Air Conditioner, Ceiling 9 ft., Closet Organizers, Deck, No Smoking Home, Vaulted Ceiling, Walkout Basement, HRV System
Parking	Double Garage Attached

Interior

Interior Features	ensuite bathroom
Appliances	Air Conditioning-Central, Dishwasher-Built-In, Dryer, Garage Opener, Hood Fan, Refrigerator, Stove-Gas, Washer
Heating	Forced Air-1, Natural Gas
Stories	3
Has Basement	Yes
Basement	Full, Finished

Exterior

Exterior	Wood, Vinyl
Exterior Features	Cul-De-Sac, Fenced, Landscaped, Stream/Pond, See Remarks
Roof	Asphalt Shingles
Construction	Wood, Vinyl
Foundation	Concrete Perimeter

School Information

Elementary	Constable Daniel Woodall
Middle	Riverbend Junior High
High	Lillian Osborne

Additional Information

Date Listed	March 7th, 2025
-------------	-----------------

Days on Market	6
----------------	---

Zoning	Zone 56
--------	---------

DATA IS DEEMED RELIABLE BUT IS NOT GUARANTEED ACCURATE BY THE REALTORS® ASSOCIATION OF EDMONTON. COPYRIGHT 2025 BY THE REALTORS® ASSOCIATION OF EDMONTON. ALL RIGHTS RESERVED. Trademarks are owned or controlled by the Canadian Real Estate Association (CREA) and identify real estate professionals who are members of CREA (REALTOR®, REALTORS®) and/or the quality of services they provide (MLS®, Multiple Listing Service®)

Listing information last updated on March 13th, 2025 at 1:32pm MDT