

\$1,659,000 - 4 & 6 Sunshine Bay Road, Rural Parkland County

MLS® #E4424413

\$1,659,000

3 Bedroom, 2.00 Bathroom, 861 sqft

Rural on 0.97 Acres

Sunshine Bay, Rural Parkland County, AB

Welcome to your private lakeside retreat at 4 & 6 Sunshine Bay Road! This double-lot property provides close to 1 acre of land with 150ft of pristine lakefront located along a large bay, a natural harbor, that provides calm waters and shelter from the wind. Enjoy the existing 3-bedroom home or build your dream cabin on the secondary lot and use it as a guest house! Built in 2007, this property boasts unparalleled storage options. The main floor features both a double garage and a large tandem style single garage with a 20ft ceiling and 16 ft tall overhead door. Both garages are heated with a convenient 3-pc bath allowing you to rinse off after a day on the beach or water. The upper floor consists of your living area with 3 bedrooms, a 4-pc bath, living room, dining room, and kitchen overlooking the lake from a beautiful vantage point. A large, covered deck allows you to spend time outside enjoying your surroundings. Sailing enthusiasts will love the close proximity to the Sunshine Bay Yacht Club

Built in 2007

Essential Information

MLS® #	E4424413
Price	\$1,659,000



Bedrooms	3
Bathrooms	2.00
Full Baths	2
Square Footage	861
Acres	0.97
Year Built	2007
Type	Rural
Sub-Type	Detached Single Family
Style	2 Storey
Status	Active

Community Information

Address	4 & 6 Sunshine Bay Road
Area	Rural Parkland County
Subdivision	Sunshine Bay
City	Rural Parkland County
County	ALBERTA
Province	AB
Postal Code	T0E 0V0

Amenities

Features	Deck, Detectors Smoke, Patio, See Remarks, Natural Gas BBQ Hookup
----------	-------------------------------------------------------------------

Interior

Heating	In Floor Heat System, Natural Gas
Stories	2
Has Basement	Yes
Basement	None, No Basement

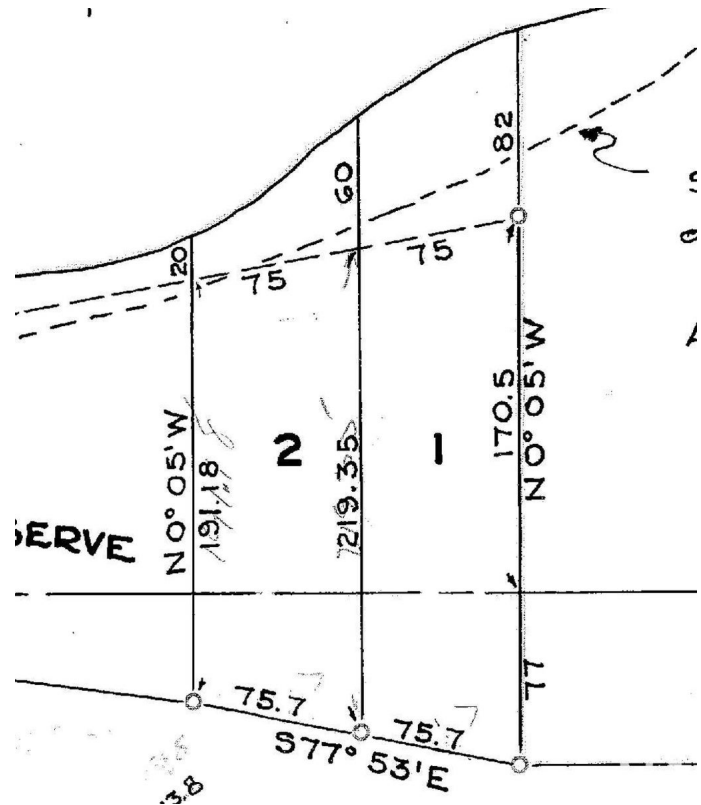
Exterior

Exterior	Wood
Exterior Features	Fruit Trees/Shrubs, Golf Nearby, Lake View, Landscaped, No Back Lane, No Through Road, Private Fishing, Private Setting, Sloping Lot, Treed Lot, Waterfront Property, See Remarks, Partially Fenced
Construction	Wood
Foundation	Slab

Additional Information

Date Listed	March 6th, 2025
-------------	-----------------

Days on Market 94
Zoning Zone 93



DATA IS DEEMED RELIABLE BUT IS NOT GUARANTEED ACCURATE BY THE REALTORS® ASSOCIATION OF EDMONTON. COPYRIGHT 2025 BY THE REALTORS® ASSOCIATION OF EDMONTON. ALL RIGHTS RESERVED. Trademarks are owned or controlled by the Canadian Real Estate Association (CREA) and identify real estate professionals who are members of CREA (REALTOR®, REALTORS®) and/or the quality of services they provide (MLS®, Multiple Listing Service®)

Listing information last updated on June 7th, 2025 at 9:47pm MDT