

Courtesy Of Dwight Streu Of MaxWell Polaris

## \$599,900 - 17115 71 Street, Edmonton

MLS® #E4424293

**\$599,900**

4 Bedroom, 3.50 Bathroom, 2,038 sqft

Single Family on 0.00 Acres

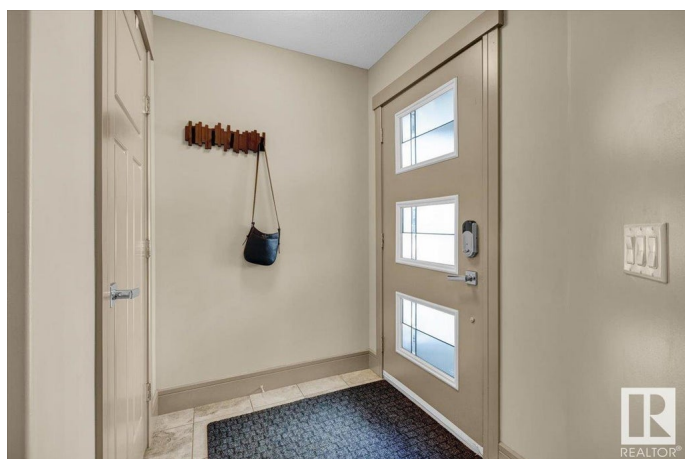
Schonsee, Edmonton, AB

Former Coventry showhome is meticulously maintained inside and out. Open floor plan with kitchen open to the great room with feature brick fireplace. Kitchen offers a walk thru pantry, large island, granite counters, tile backsplash, under cabinet lighting, built in wine rack and stainless steel appliances. Main floor den/flex room. Large 2nd floor bonus room with vaulted ceilings. 2nd floor laundry. Spacious primary bedroom with full ensuite. Professionally finished basement with 4th bedroom, full bath with granite counters and family room with gas fireplace. Tankless hot water, Central A/C. Beautifully landscaped yard with raised deck. Shows extremely well! For more details please visit the REALTOR® Website.

Built in 2013

### Essential Information

MLS® #	E4424293
Price	\$599,900
Bedrooms	4
Bathrooms	3.50
Full Baths	3
Half Baths	1
Square Footage	2,038
Acres	0.00



Year Built	2013
Type	Single Family
Sub-Type	Detached Single Family
Style	2 Storey
Status	Active

### **Community Information**

Address	17115 71 Street
Area	Edmonton
Subdivision	Schonsee
City	Edmonton
County	ALBERTA
Province	AB
Postal Code	T5Z 0H1

### **Amenities**

Amenities	Air Conditioner, Deck
Parking Spaces	4
Parking	Double Garage Attached

### **Interior**

Interior Features	ensuite bathroom
Appliances	Dishwasher-Built-In, Dryer, Garage Control, Garage Opener, Refrigerator, Storage Shed, Stove-Electric, Washer, Window Coverings
Heating	Forced Air-1, Natural Gas
Fireplace	Yes
Fireplaces	Corner, Mantel, Stone Facing
Stories	3
Has Basement	Yes
Basement	Full, Finished

### **Exterior**

Exterior	Wood, Stone, Vinyl
Exterior Features	Landscaped, Playground Nearby, Public Transportation, Schools, Shopping Nearby
Roof	Asphalt Shingles
Construction	Wood, Stone, Vinyl
Foundation	Concrete Perimeter

### **School Information**

Elementary	NorthMount/St. John Bosco
Middle	Dickinsfield/J.J Bowlen
High	M.E. Lazerte/Archbishop O'

### **Additional Information**

Date Listed            March 6th, 2025

Days on Market      8

Zoning                 Zone 28

DATA IS DEEMED RELIABLE BUT IS NOT GUARANTEED ACCURATE BY THE REALTORS® ASSOCIATION OF EDMONTON. COPYRIGHT 2025 BY THE REALTORS® ASSOCIATION OF EDMONTON. ALL RIGHTS RESERVED. Trademarks are owned or controlled by the Canadian Real Estate Association (CREA) and identify real estate professionals who are members of CREA (REALTOR®, REALTORS®) and/or the quality of services they provide (MLS®, Multiple Listing Service®)

Listing information last updated on March 13th, 2025 at 10:17pm MDT