

\$560,000 - 16787 36 Street, Edmonton

MLS® #E4424116

\$560,000

3 Bedroom, 2.50 Bathroom, 1,876 sqft
Single Family on 0.00 Acres

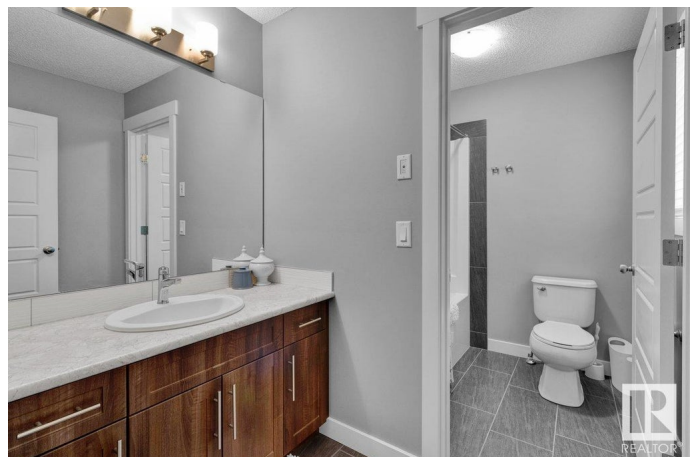
Cy Becker, Edmonton, AB

DAYTONA built home w/ numerous upgrades! The kitchen is sure to impress w/ quartz counters, subway tile backsplash, extended cabinetry, a garburator, upgraded appliances (Including a gas stove & fridge w/ a water line) & MORE! The living room features a custom stone surround gas fireplace. Outside is an ENTERTAINERS DREAM, w/ a hot tub, pergola, gas line, & an aggregate patio. THERE ARE NO NEIGHBOURS BEHIND. Upstairs has a large bonus room w/ a built in bar & mini fridge. The primary room is your own private oasis, w/ plenty of space for a king bed, a large walk-in closet, & a spa like 5pc ensuite w/ a soaker tub, glass shower, double sinks, & dimmer switches. The primary room has a stunning view overlooking the green space behind. The washer/ dryer are connected to the primary room for added convenience. Finishing the upstairs are 2 more large bedrooms w/ built-in shelving, & a 4pc bathroom. Other features: ALL NEW CARPET UPSTAIRS, main floor den, gas line & drain in the garage, east facing yard, & MORE!

Built in 2018

Essential Information

MLS® #	E4424116
Price	\$560,000



Bedrooms	3
Bathrooms	2.50
Full Baths	2
Half Baths	1
Square Footage	1,876
Acres	0.00
Year Built	2018
Type	Single Family
Sub-Type	Detached Single Family
Style	2 Storey
Status	Active

Community Information

Address	16787 36 Street
Area	Edmonton
Subdivision	Cy Becker
City	Edmonton
County	ALBERTA
Province	AB
Postal Code	T5Y 0X7

Amenities

Amenities	Hot Tub, Patio, See Remarks
Parking Spaces	4
Parking	Double Garage Attached

Interior

Interior Features	ensuite bathroom
Appliances	Dishwasher-Built-In, Dryer, Garage Control, Garage Opener, Oven-Microwave, Refrigerator, Stove-Gas, Washer, Window Coverings, See Remarks, TV Wall Mount, Hot Tub
Heating	Forced Air-1, Natural Gas
Fireplace	Yes
Fireplaces	Stone Facing
Stories	2
Has Basement	Yes
Basement	Full, Unfinished

Exterior

Exterior	Wood, Vinyl
Exterior Features	Landscaped, Public Transportation, Schools, Shopping Nearby
Roof	Asphalt Shingles
Construction	Wood, Vinyl
Foundation	Concrete Perimeter

School Information

Elementary	Belvedere/Christ The King
Middle	Steele Heights/
High	M.E Lazerte/Archbishop O'I

Additional Information

Date Listed	March 5th, 2025
Days on Market	9
Zoning	Zone 03

DATA IS DEEMED RELIABLE BUT IS NOT GUARANTEED ACCURATE BY THE REALTORS® ASSOCIATION OF EDMONTON. COPYRIGHT 2025 BY THE REALTORS® ASSOCIATION OF EDMONTON. ALL RIGHTS RESERVED. Trademarks are owned or controlled by the Canadian Real Estate Association (CREA) and identify real estate professionals who are members of CREA (REALTOR®, REALTORS®) and/or the quality of services they provide (MLS®, Multiple Listing Service®)

Listing information last updated on March 13th, 2025 at 10:32pm MDT