

\$359,900 - 20303 16 Avenue, Edmonton

MLS® #E4423534

\$359,900

2 Bedroom, 2.50 Bathroom, 1,395 sqft
Single Family on 0.00 Acres

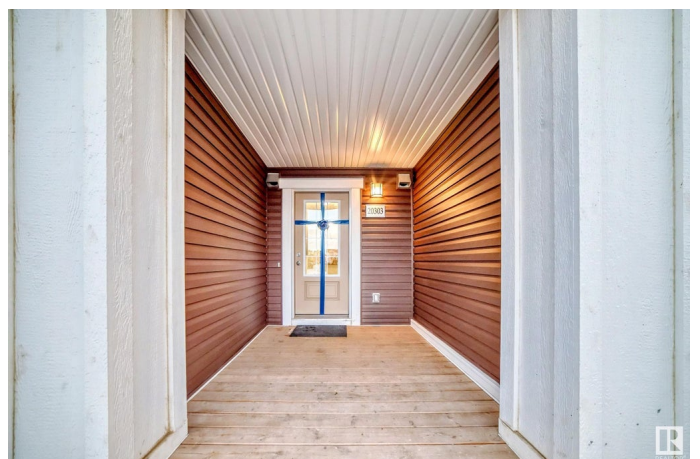
Stillwater, Edmonton, AB

STUNNING MODERN TOWNHOUSE WITH NO CONDO FEES! Welcome to award-winning Stillwater, one of SW Edmonton's most sought-after communities. Situated in the BEST LOCATION in the complex, this stylish & well-designed home offers just under 1,400 SF of PREMIUM living space. Step inside to discover an open-concept layout, complete with LUXURY finishes throughout. The kitchen is a SHOWSTOPPER, boasting quartz c-tops, huge 8'6" island & STAINLESS STEEL Whirlpool appliances. The living room offers an UNOBSTRUCTED VIEW, cozy fireplace & direct access to the large balcony w/NAT. GAS BBQ hookup. The SPACIOUS primary suite includes a 4-pc ensuite & walk-in closet. Plus, the upstairs features a LAUNDRY ROOM, add'l 4-pc bath & second bedroom. UPGRADED fixtures, railings & zebra blinds add a contemporary touch. Living in Stillwater means enjoying walking trails, parks & a TOP-TIER amenity center (HOA clubhouse, skating rink, spray park & more). Plus, with quick access to the Henday, daily essentials are just minutes away!

Built in 2020

Essential Information

MLS® # E4423534



Price	\$359,900
Bedrooms	2
Bathrooms	2.50
Full Baths	2
Half Baths	1
Square Footage	1,395
Acres	0.00
Year Built	2020
Type	Single Family
Sub-Type	Residential Attached
Style	3 Storey
Status	Active

Community Information

Address	20303 16 Avenue
Area	Edmonton
Subdivision	Stillwater
City	Edmonton
County	ALBERTA
Province	AB
Postal Code	T6M 1K8

Amenities

Amenities	On Street Parking, Carbon Monoxide Detectors, Closet Organizers, Detectors Smoke, Front Porch, Hot Water Electric, No Animal Home, No Smoking Home, Smart/Program. Thermostat, Vinyl Windows, HRV System, Natural Gas BBQ Hookup
Parking Spaces	2
Parking	Front Drive Access, Single Garage Attached

Interior

Interior Features	ensuite bathroom
Appliances	Dishwasher-Built-In, Dryer, Garage Control, Garage Opener, Microwave Hood Fan, Refrigerator, Stove-Electric, Washer, Window Coverings, TV Wall Mount
Heating	Forced Air-1, Natural Gas
Fireplace	Yes
Fireplaces	Insert, Mantel, Remote Control
Stories	3

Has Basement	Yes
Basement	Partial, Unfinished

Exterior

Exterior	Wood, Vinyl
Exterior Features	Landscaped, No Back Lane, Playground Nearby, Public Transportation, Schools, Shopping Nearby, Ski Hill Nearby
Roof	Asphalt Shingles
Construction	Wood, Vinyl
Foundation	Concrete Perimeter

School Information

Elementary	Ormsby
Middle	S. Bruce Smith
High	Jasper Place

Additional Information

Date Listed	March 1st, 2025
Days on Market	13
Zoning	Zone 57
HOA Fees	420
HOA Fees Freq.	Annually

DATA IS DEEMED RELIABLE BUT IS NOT GUARANTEED ACCURATE BY THE REALTORS® ASSOCIATION OF EDMONTON. COPYRIGHT 2025 BY THE REALTORS® ASSOCIATION OF EDMONTON. ALL RIGHTS RESERVED. Trademarks are owned or controlled by the Canadian Real Estate Association (CREA) and identify real estate professionals who are members of CREA (REALTOR®, REALTORS®) and/or the quality of services they provide (MLS®, Multiple Listing Service®)

Listing information last updated on March 14th, 2025 at 4:17pm MDT