

Courtesy Of Sharon Y Gregresh Of Century 21 Masters

\$450,000 - 215 11520 100 Avenue, Edmonton

MLS® #E4414879

\$450,000

0 Bedroom, 0.00 Bathroom,
Office on 0.00 Acres

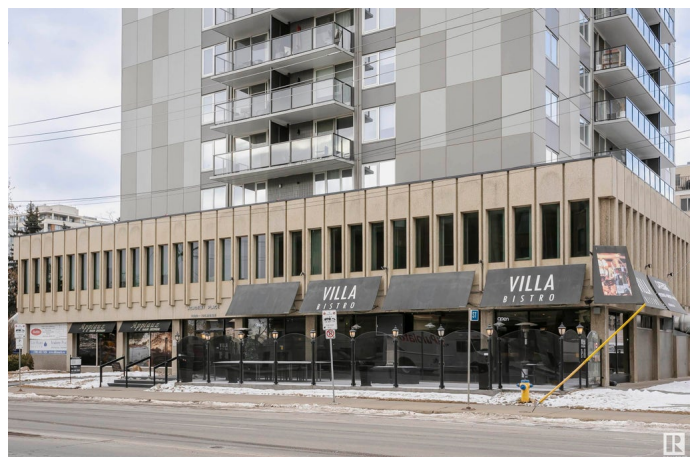
Oliver, Edmonton, AB

Exceptional commercial space in the heart of Downtown Edmonton, currently utilized as a law office but suitable for any professional office needs. Located on the corner of 110 Ave & 116 St, across from the historic LeMarchand Mansion and Grant Notley Park, this mixed-use building offers prime visibility and convenience. The property features 7 large offices, a spacious boardroom, a fully equipped kitchen, a welcoming reception area, and a central space perfect for additional desks or modular workstations. All offices boast expansive windows, filling the space with natural light. The building also has its own parkade, ensuring ample parking for staff and clients. Residential units above the commercial space create a vibrant, mixed-use environment. Don't miss this rare opportunity to secure a beautifully designed office space in a prestigious downtown location.

Built in 1969

Essential Information

MLS® #	E4414879
Price	\$450,000
Bathrooms	0.00
Acres	0.00
Year Built	1969
Type	Office



Status Active

Community Information

Address 215 11520 100 Avenue
Area Edmonton
Subdivision Oliver
City Edmonton
County ALBERTA
Province AB
Postal Code T5K 0J7

Exterior

Exterior Concrete
Construction Concrete

Additional Information

Date Listed November 28th, 2024
Days on Market 106
Zoning Zone 12

DATA IS DEEMED RELIABLE BUT IS NOT GUARANTEED ACCURATE BY THE REALTORS® ASSOCIATION OF EDMONTON. COPYRIGHT 2025 BY THE REALTORS® ASSOCIATION OF EDMONTON. ALL RIGHTS RESERVED. Trademarks are owned or controlled by the Canadian Real Estate Association (CREA) and identify real estate professionals who are members of CREA (REALTOR®, REALTORS®) and/or the quality of services they provide (MLS®, Multiple Listing Service®)

Listing information last updated on March 13th, 2025 at 11:32pm MDT